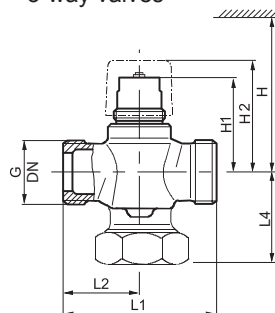


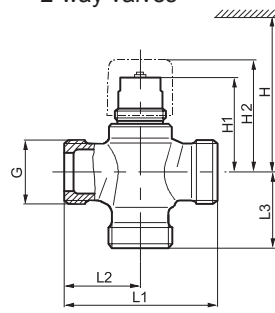
2 and 3 way valves



3-way valves



2-way valves



Used in ventilation systems to control the temperature of supplied water in water heaters. For fan coil units, small reheaters and small re-coolers.



Триегис/двиегис воштуvas naudojamas vėdinimo sistemose valdyti vandens šildytuvo ar aušintuvo tiekiamą oro temperatūrą.



Stosowane w systemach wentylacyjnych, aby kontrolować temperaturę dostarczonej wody do nagrzewnic wodnych. Zastosowanie: klimakonwektory, nagrzewnice i chłodnice.



Используется в системах вентиляции для контроля температуры подаваемой воды в водонагревателях. Предназначены для водяных нагревателей и охладителей.

2-way valves									
Type	DN	G [inch]	H [mm]	H1 [mm]	H2 [mm]	L1 [mm]	L2 [mm]	L4 [mm]	Weight [kg]
VVP45.10-0.25...1.6	10	G½B	> 200	44,9	≈ 54	60	30	20	0,26
VVP45.15-2.5	15	G¾B		44,9	≈ 54	65	32,5	20	0,30
VVP45.20-4	20	G1B		48,9	≈ 58	80	40	24	0,42
VVP45.25-6.3	25	G1¼B	> 280	51	≈ 60	80	40	49	0,76
VVP45.25-10		G1½B		62,5	≈ 71	105	52,5	62,5	1,40
VVP45.32-16	32	G2B		69	≈ 78	105	52,5	63,5	1,95
VVP45.40-25	40	G2¼B	72	≈ 81	130	65	76	2,75	
3-way valves									
Type	DN	G [inch]	H [mm]	H1 [mm]	H2 [mm]	L1 [mm]	L2 [mm]	L4 [mm]	Weight [kg]
VXP45.10-0.25...1.6	10	G½B	> 200	44,9	≈ 54	60	30	30	0,28
VXP45.15-2.5	15	G¾B		44,9	≈ 54	65	32,5	32,5	0,34
VXP45.20-4	20	G1B		48,9	≈ 58	80	40	40	0,48
VXP45.25-6.3	25	G1¼B	> 280	51	≈ 60	80	40	40	0,64
VXP45.25-10	25	G1½B		62,5	≈ 81	105	52,5	52,5	1,20
VXP45.32-16	32	G2B		69	≈ 88	105	52,5	52,5	1,60
VXP45.40-25	40	G2¼B	72	≈ 91	130	65	65	2,30	

VVP45... 2-way	VXP45... 3-way	DN	Connection	k _{vs} A→AB [m³/h]	k _{vs} 1) B→AB [m³/h]	S _v
VVP45.10-0.25	VXP45.10-0.25	10	G½B	0,25	0,18	> 50
VVP45.10-0.4	VXP45.10-0.4			0,4	0,28	
VVP45.10-0.63	VXP45.10-0.63			0,63	0,44	
VVP45.10-1	VXP45.10-1			1,0	0,70	
VVP45.10-1.6	VXP45.10-1.6			1,6	1,12	
VVP45.15-2.5	VXP45.15-2.5	15	G¾B	2,5	1,75	> 100
VVP45.20-4	VXP45.20-4	20	G1B	4,0	2,80	
VVP45.25-6.3	VXP45.25-6.3	25	G1¼B	6,3	4,40	
VVP45.25-10	VXP45.25-10		G1½B	10		
VVP45.32-16	VXP45.32-16	32	G2B	16		
VVP45.40-25	VXP45.40-25	40	G2¼B	25		

1) - Valid for 3-way version only

DN = Nominal size

k_{vs} = Nominal flow rate of cold water (5...30 °C) through the fully open valve (H₁₀₀) by a differential pressure of 100 kPa (1 bar)

S_v = Range ability k_{vs} / k_v

k_v = Smallest k_v value, at which the flow characteristic tolerances can still be maintained, by a differential pressure of 100 kPa (1 bar)

Functionl data

Medium temperature	1...110 °C, short-term max. 120 °C
Nominal stroke	5.5 mm
Permissible media	low temperature hot water, chilled water, water with anti-freeze recommendation: water treatment to VDI 2035